

Holland Park School has made strong progress in recent years and, with the backing of the local community, we have a great opportunity to develop a school of outstanding quality.

Please visit our website hpstrust.co.uk where we have uploaded a film of the trust's recent work with students, teachers and supporters, or contact us and we will send you a DVD of the film 'Help Our Students to Excel'. You can also view a series of questions and answers about the trust and the school, and find out how to support us. The school is planning special events for donors to learn more about the school. Find out more on our website.

All donations are welcome and all donors will receive a trust pin which we hope everyone in the community will wear.

There are three ways you can especially support us:

Friends

Friends make a donation of a sum between £100 and £250. Friends' names appear on the trust website, they receive a termly newsletter and are invited to trust-sponsored school occasions.

Benefactors

Benefactors make a donation of between £250 and £1,500. They too are listed on our website, receive the newsletter, are invited to trust-sponsored school occasions and to an annual reception with trustees and school leaders.



Patrons and Founder Patrons

Patrons make a substantial donation of a sum between £1,500 and £10,000.

Founder Patrons, like our original founder, are those who make an exceptional financial donation to the trust.

Patrons and Founder Patrons, as well as receiving the above benefits, have their names listed on the HPS Trust Patrons' Board in the school. They are invited to trust-sponsored school occasions and to an annual reception with trustees, benefactors and school leaders.

We are particularly pleased to receive commitments for more than a year from donors.

Our website explains the tax benefits of [Gift Aid](#).

"Good schools not only bring enormous benefits to young people but also to the communities that surround them. Let us make an example of Holland Park School as a very good school well supported by its local community – which is to everyone's advantage."



Please come along to the school and support our first
fund-raising event on 23rd November at 7:00pm

HPS Trust director can be contacted
by email: tony.howie@hpstrust.co.uk
or by phone on 020 7228 7940.

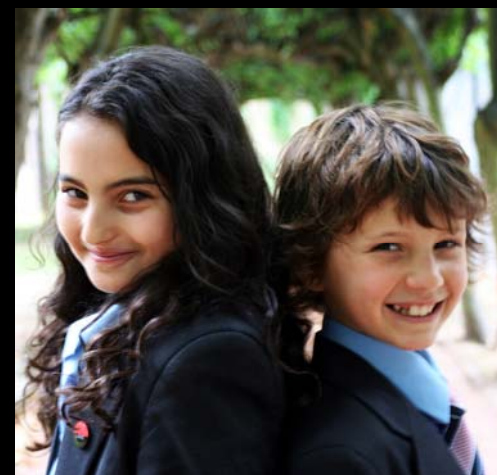
You may also contact any of the
trustees through him OR write to:

The Director, HPS Trust
Holland Park School
Airlie Gardens
Campden Hill Road
London W8 7AF

www.hpstrust.co.uk

HPS Trust

THIS YEAR WE ARE ASKING
EVERYONE
IN KENSINGTON AND CHELSEA
TO GIVE TO THE TRUST WHICH
SUPPORTS THE ONLY
NON-SELECTIVE,
COMPREHENSIVE,
SECONDARY SCHOOL
LOCATED
IN THE MIDST OF THEIR
COMMUNITY -
HOLLAND PARK SCHOOL.



The aim of the school and the trust is to ensure that all the students achieve their potential. We believe the academic students should have as good a prospect of attending the university of their choice as they would from any school, and those students who are less academic should get the extra help and support they require to lead successful and rewarding lives. We expect, in return, that all students recognise the support they get from the trust by engaging in a positive and helpful way with their local community.

HPS Trust was set up four years ago in order to support the school's determination to achieve this level of success for all its students. Today, the trust is asking everyone in Kensington and Chelsea who can, to give to the trust so that it can continue and expand its support.

